



Pine Knolls Stormwater Management Pond Retrofit

January 31, 2024



Who are we?



Why are we doing this?

- Part of Montgomery County's MS4 Permit Requirements
- Bringing the existing pond up to current standards
- Updated Stormwater Management Guidelines
- Reduction of contaminants that impact the Bay
- Increased capacity of the pond
- Compliance with Dam Safety requirements

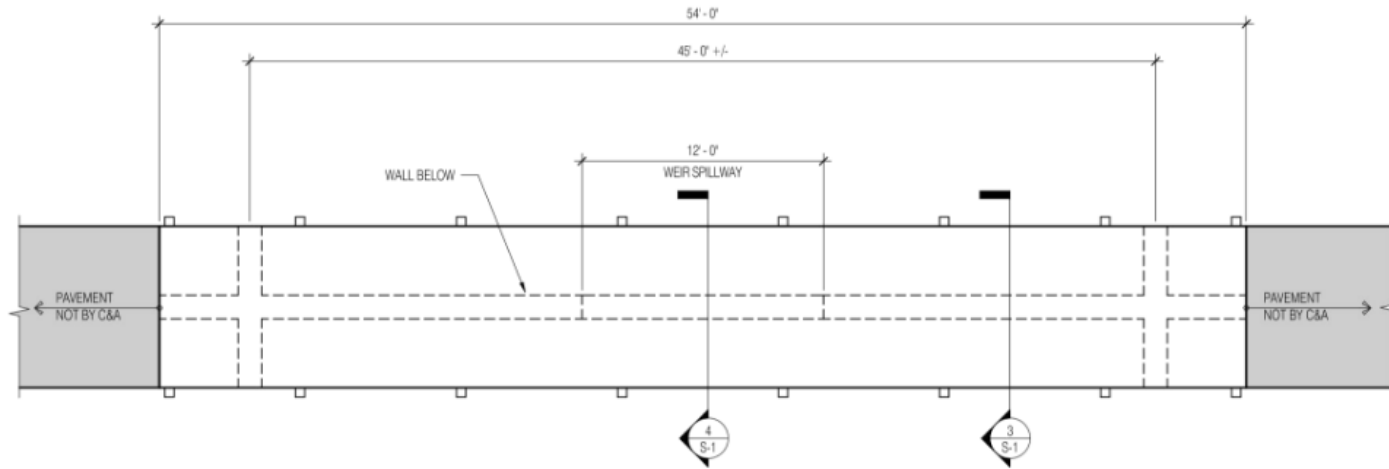
Existing Conditions

Easement with
the County

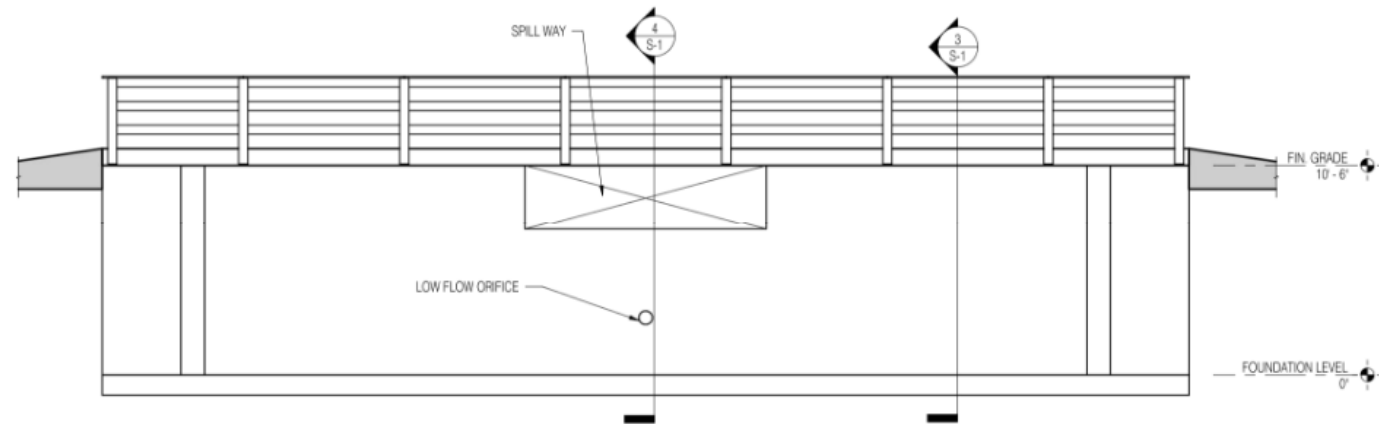


Existing
stormwater
management
pond

Concrete Weir and Bridge



1 PLAN VIEW
1/4" = 1'-0"

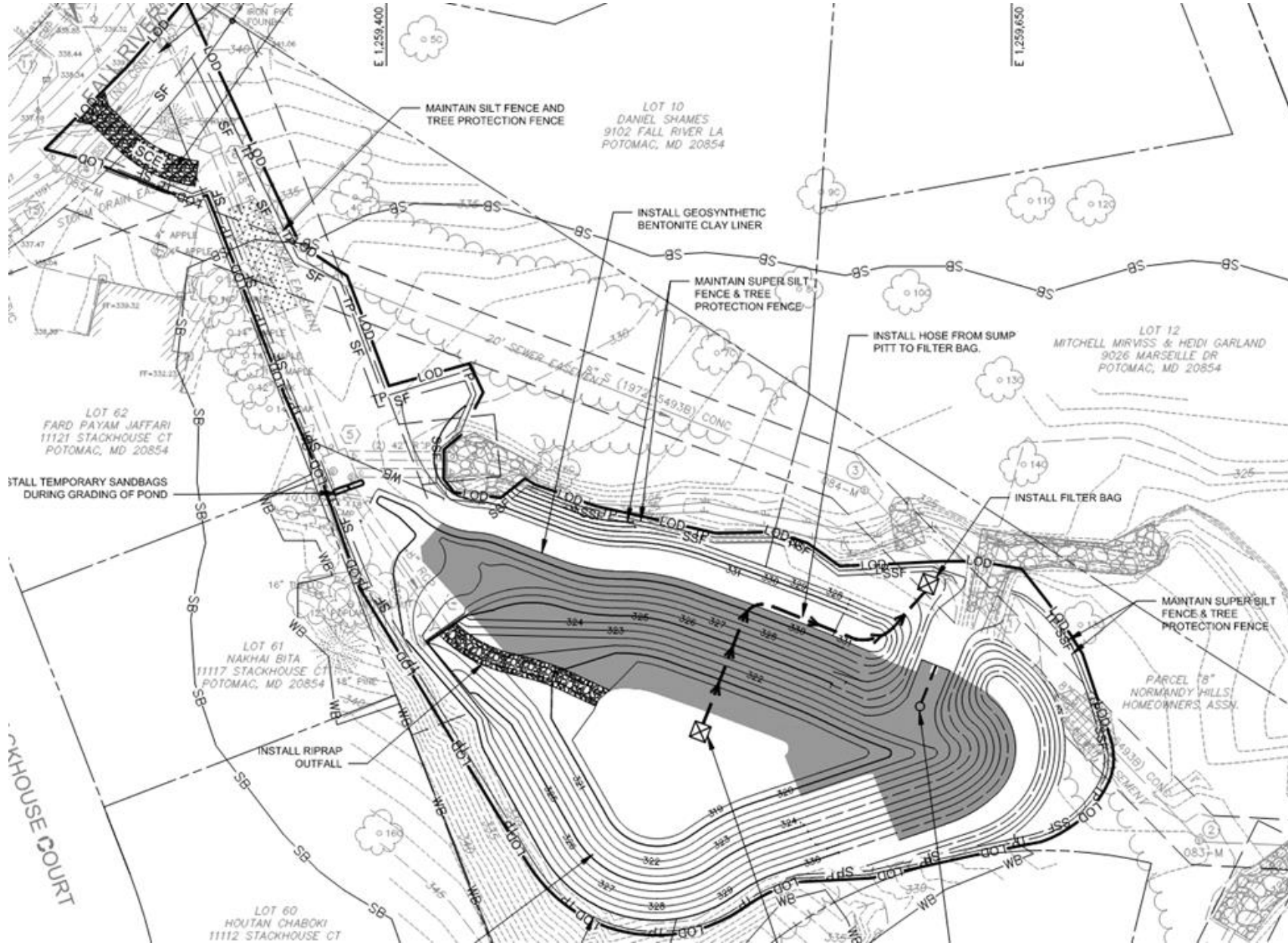


2 ELEVATION
1/4" = 1'-0"

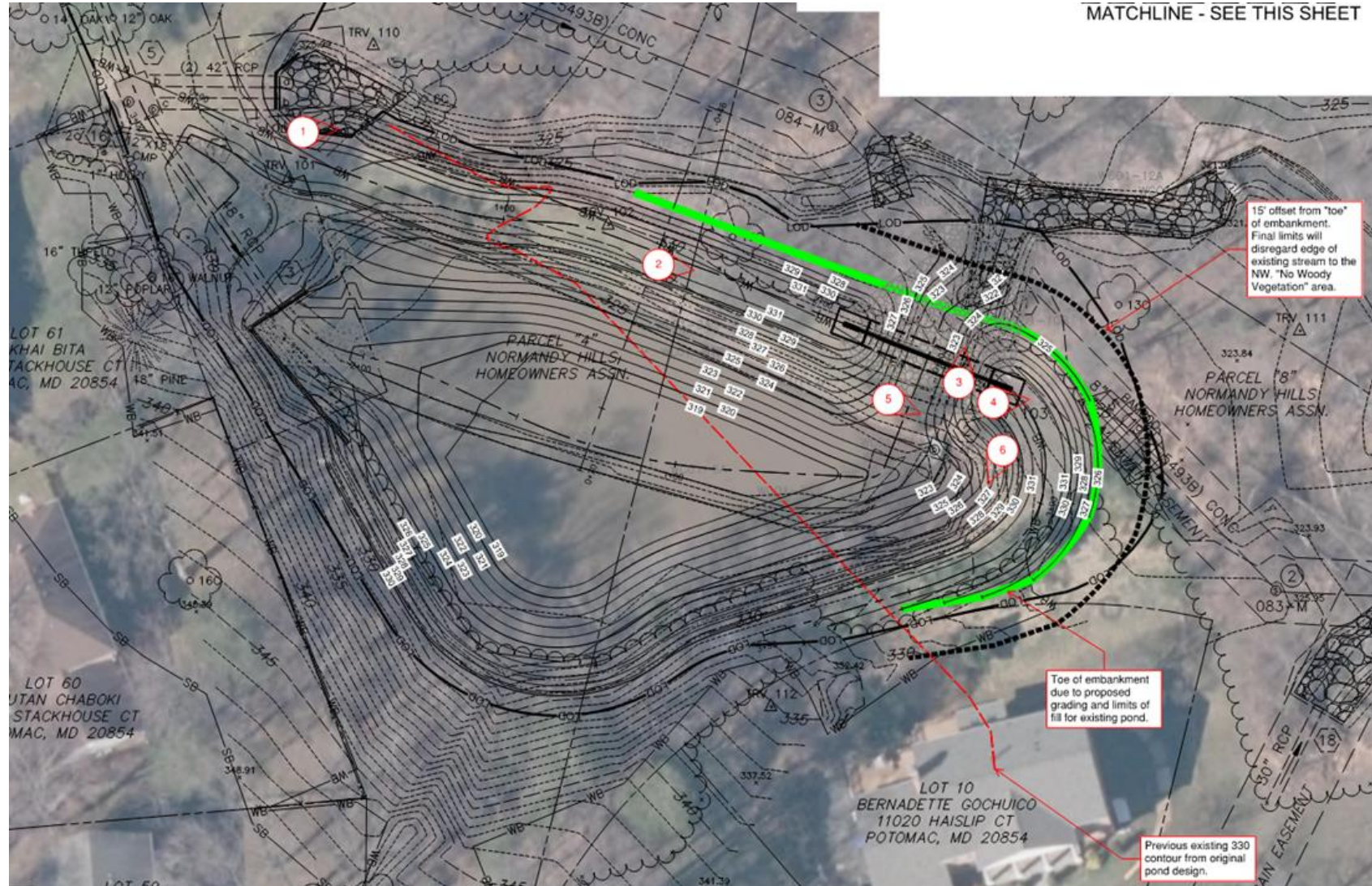
Construction

- Completed in two phases
- Should last about 3 months
- Use of heavy equipment including:
 - Backhoes
 - Excavators
 - Dump Trucks
 - Concrete Trucks
- Landscaping and Structural Warranty for 1 year

Phase 2 of Construction

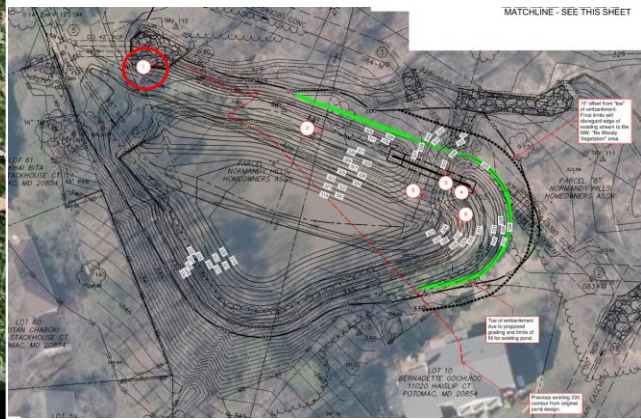


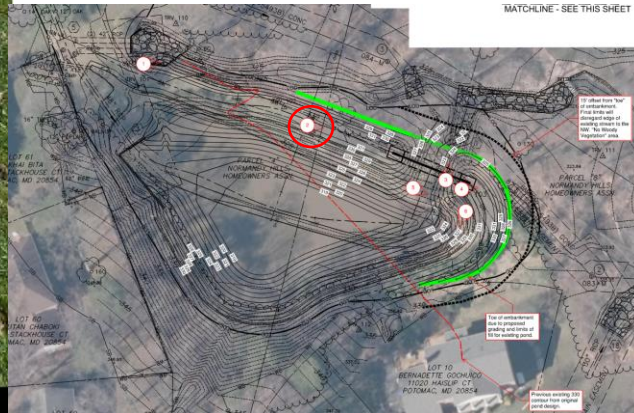
Trees near the pond





Picture #1 – Side Channel End Wall Along Northern Embankment

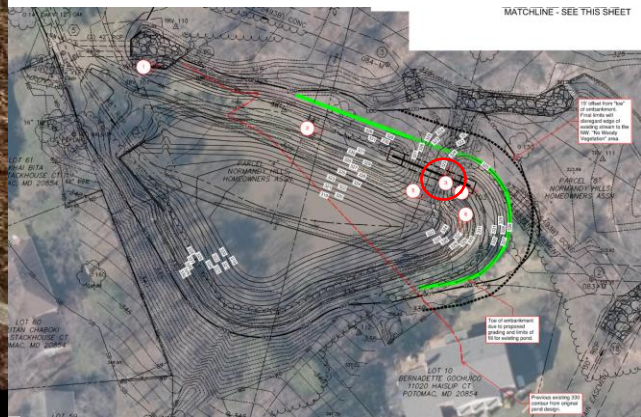


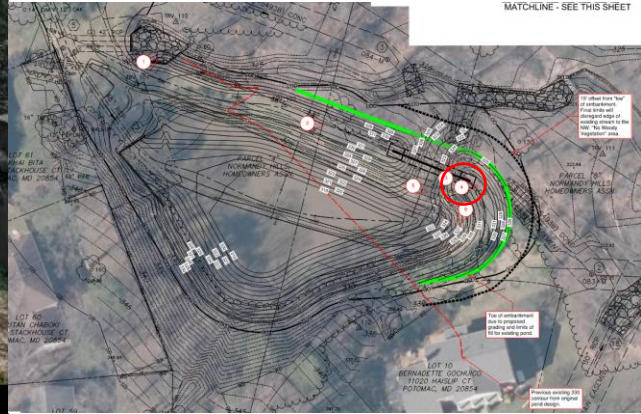


Picture #2 – Side Channel Along Northern Embankment

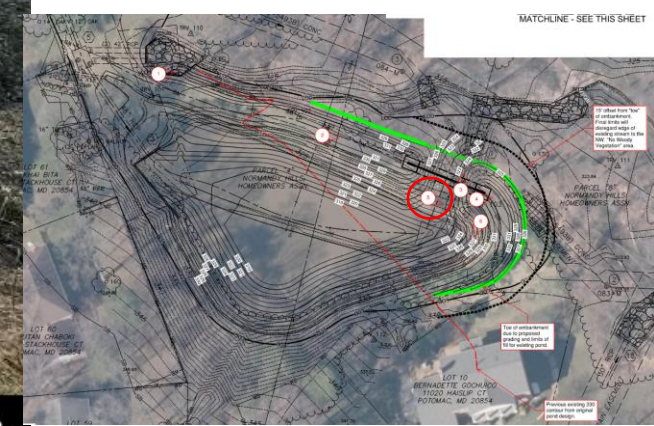


Picture #3 – Pond Outfall Along Northern Embankment

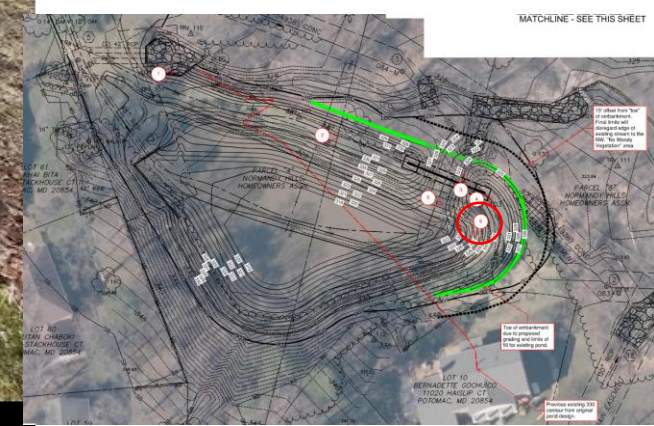




Picture # 4– Pond Outfall Along Northern Embankment



Picture #5 – Pond Outfall Looking at Eastern Embankment



Picture #6 – Eastern Embankment

Contact Us

William Weaver

State Business Manager

wweaver@res.us

Matthew Waters

Engineer III

mwaters@res.us

Reid Cook

Direction, Regional Land – Project Manager

rcook@res.us

Elsa Arias

Project Manager – Assedo Consulting, LLC

elsaa@assedollc.com

