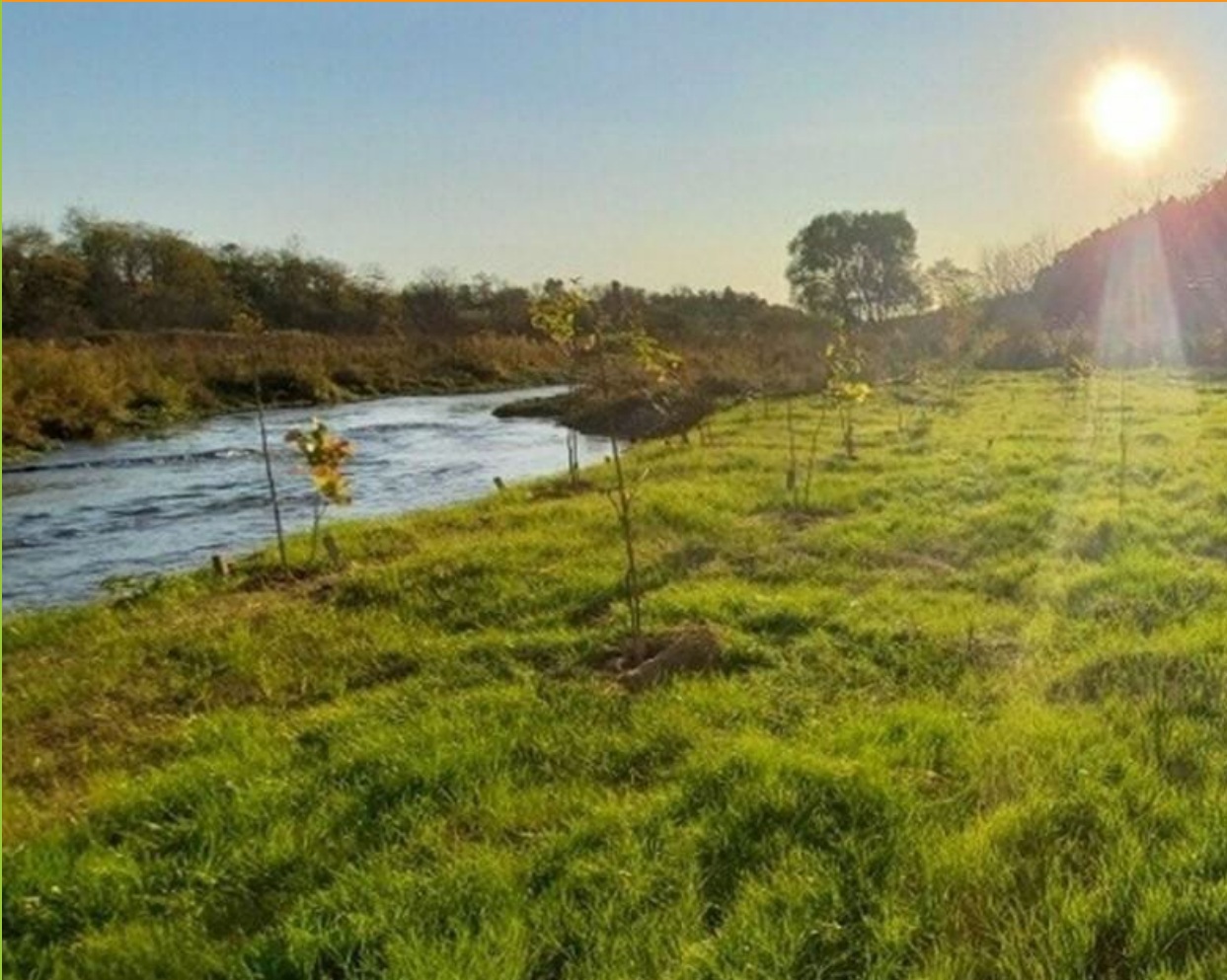


Pine Knolls Stormwater Management Pond Retrofit

Virtual Public Meeting

May 23, 2024



DEPARTMENT OF ENVIRONMENTAL PROTECTION
MONTGOMERY COUNTY • MARYLAND



Agenda

- Project Purpose
- Background
- Pond Design
- Construction Expectations
- Questions

Project Purpose

- Part of Montgomery County's MS4 Permit Requirements
- Bringing the existing pond up to current standards
- Updated Stormwater Management Guidelines
- Reduction of contaminants that impact the Bay
- Increased capacity of the pond
- Compliance with Dam Safety requirements

Project Location



Existing Conditions



Existing Conditions

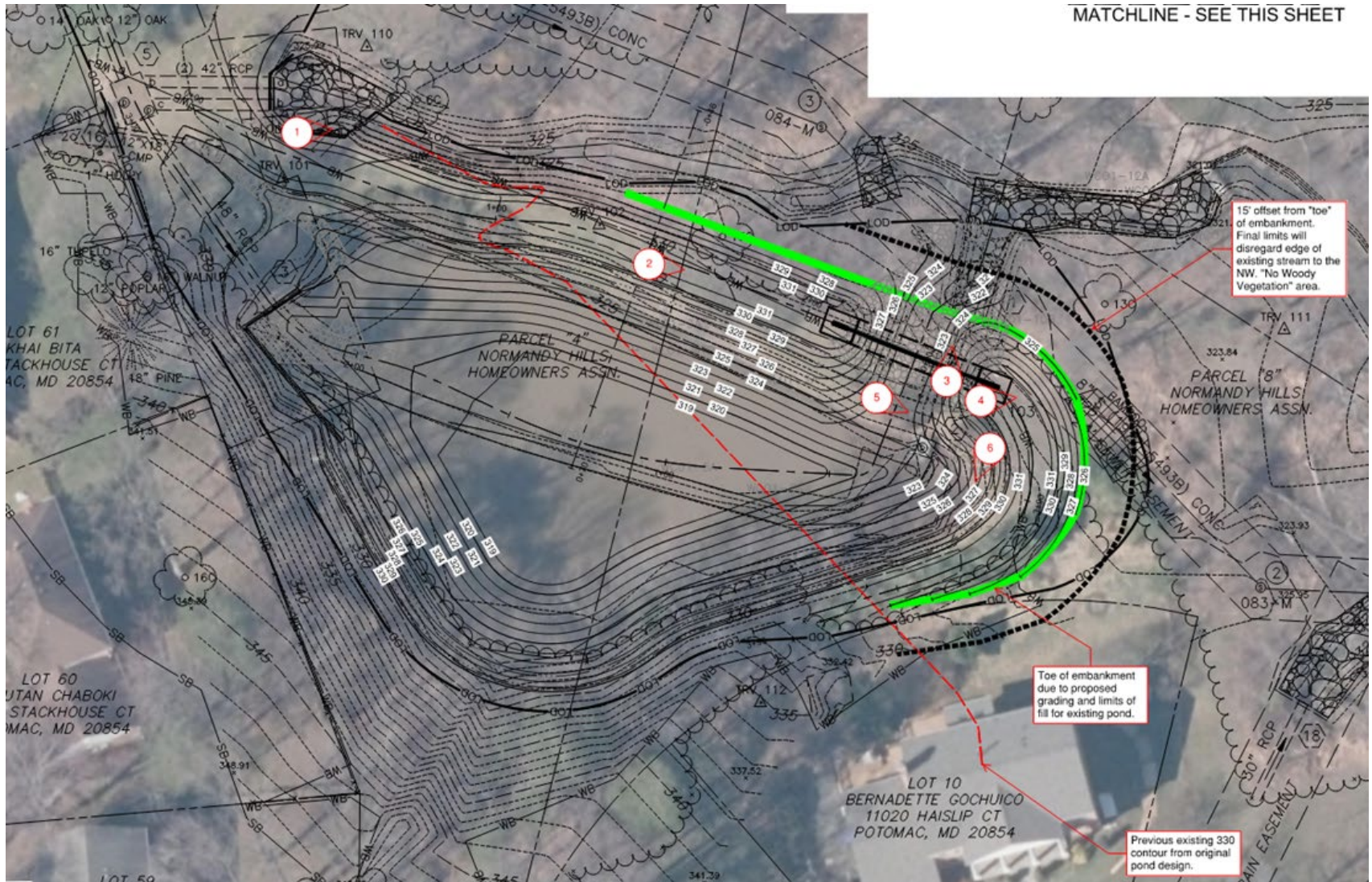
Easement with the County

Existing Stormwater Management Pond

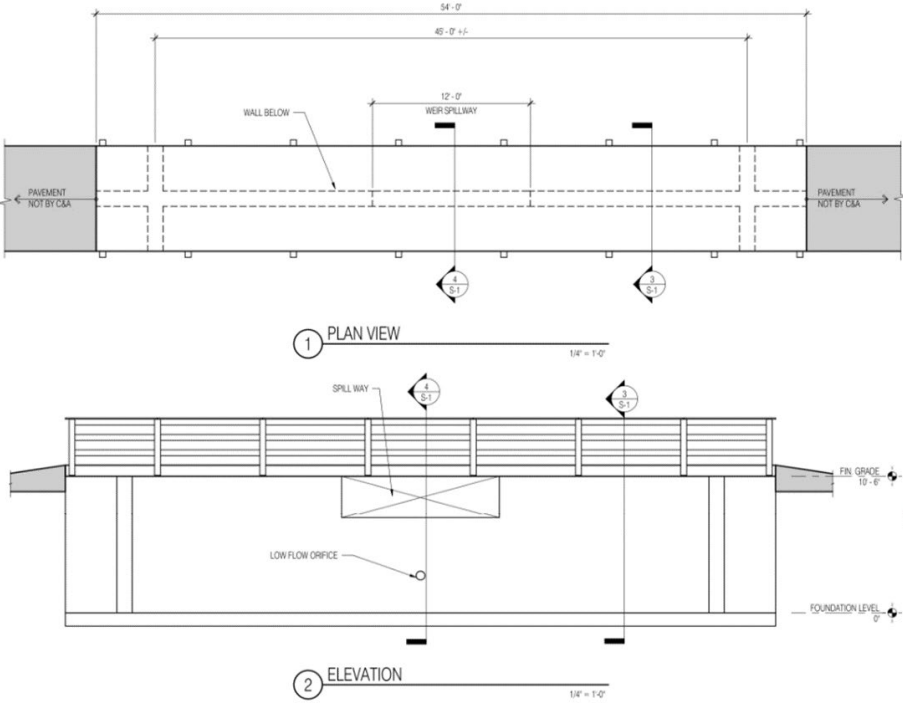


Proposed Design- Tree Clearing

MATCHLINE - SEE THIS SHEET



Proposed Design- Bridge / Weir



Construction Expectations

- Completed in two phases
- Should last about 5 months
- Use of heavy equipment including:
 - Backhoes
 - Excavators
 - Dump Trucks
 - Concrete Trucks
- Landscaping and Structural Warranty for one year
- Montgomery County responsible for long term maintenance



Construction Hours

- Monday through Friday, 7AM-5PM

Safety

- Orange Safety Fence will be installed during construction

Traffic

- Daily crew traffic and parking during the day, material delivery to the site as needed.

Retrofit Schedule

- Design and Permitting – Ongoing
- Permits Secured – Spring/Summer 2024
- Construction – Anticipated Start July/August 2024,
Anticipated Completion by End of Year 2024

Pond Example



Fallsberry Pond

Questions? Contact Us

William Weaver

State Business Manager

wweaver@res.us

Wesley Tweedy

Operations Manager

wtweedy@res.us

Reid Cook

Regional Project Delivery Director

rcook@res.us

Elsa Arias

Outreach Manager – Assedo
Consulting, LLC

elsaa@assedollc.com



DEPARTMENT OF
ENVIRONMENTAL PROTECTION
MONTGOMERY COUNTY • MARYLAND