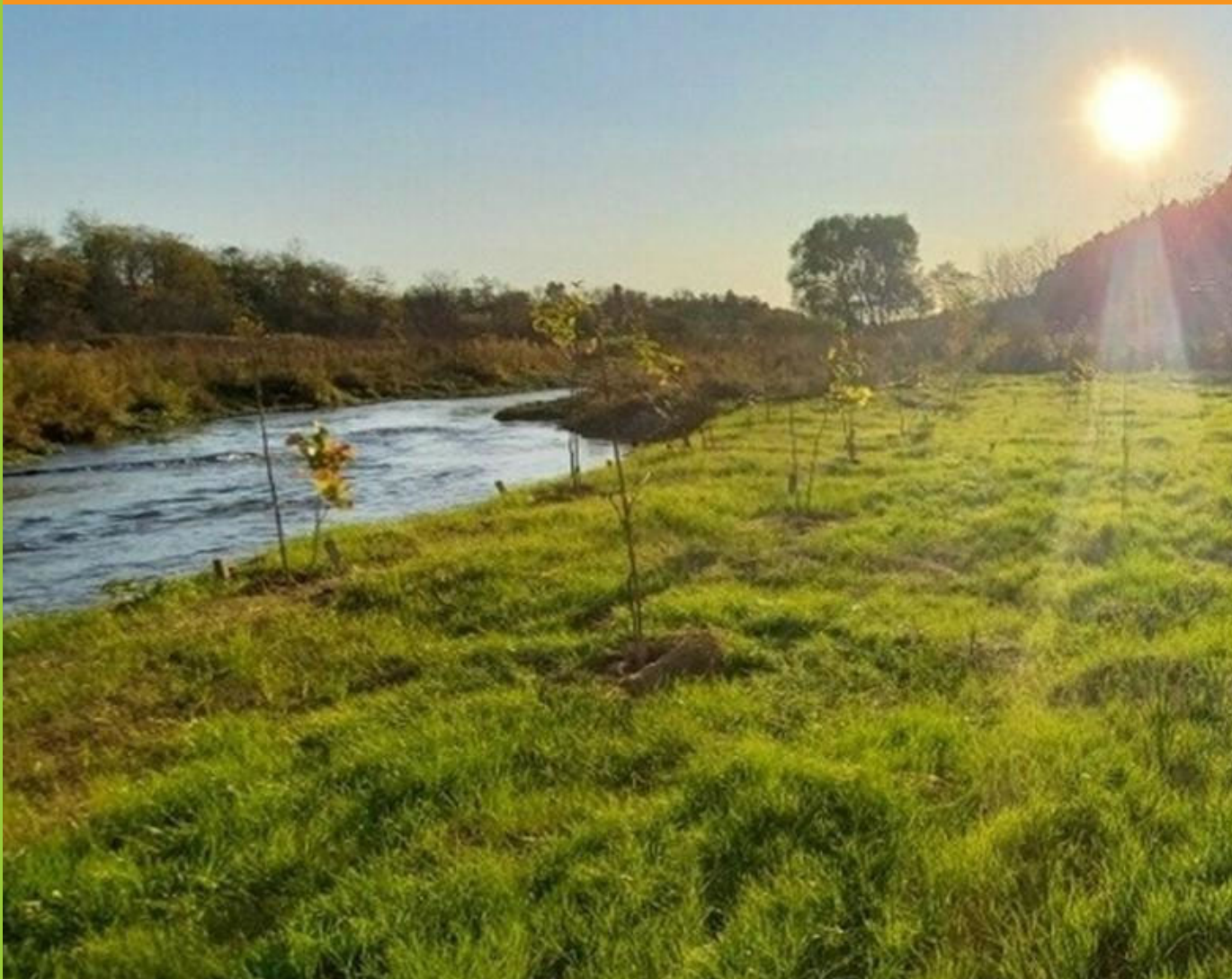


Pine Knolls Stormwater Management Pond Retrofit

Public Meeting

Nov. 7, 2024



**DEPARTMENT OF
ENVIRONMENTAL
PROTECTION**
MONTGOMERY COUNTY • MARYLAND



Agenda

- Project
- Background
- Pond Design
- Construction Expectations
- Questions

Project Purpose

- **Part of Montgomery County's MS4 (Municipal Separate Storm Sewer System) Permit Requirements**
- **Compliance with Dam Safety requirements**
- Bringing the existing pond up to current standards
- Updated Stormwater Management Guidelines
- Reduction of contaminants that impact the Bay
- Increased capacity

DEP Project Counts

Use the Search and Filter widget above to type a project drainage area name and hit Enter. Once the view is filtered, the project counts will update accordingly.

MCDEP CIP Projects - 683

MCDEP Stream Restoration Projects - 47

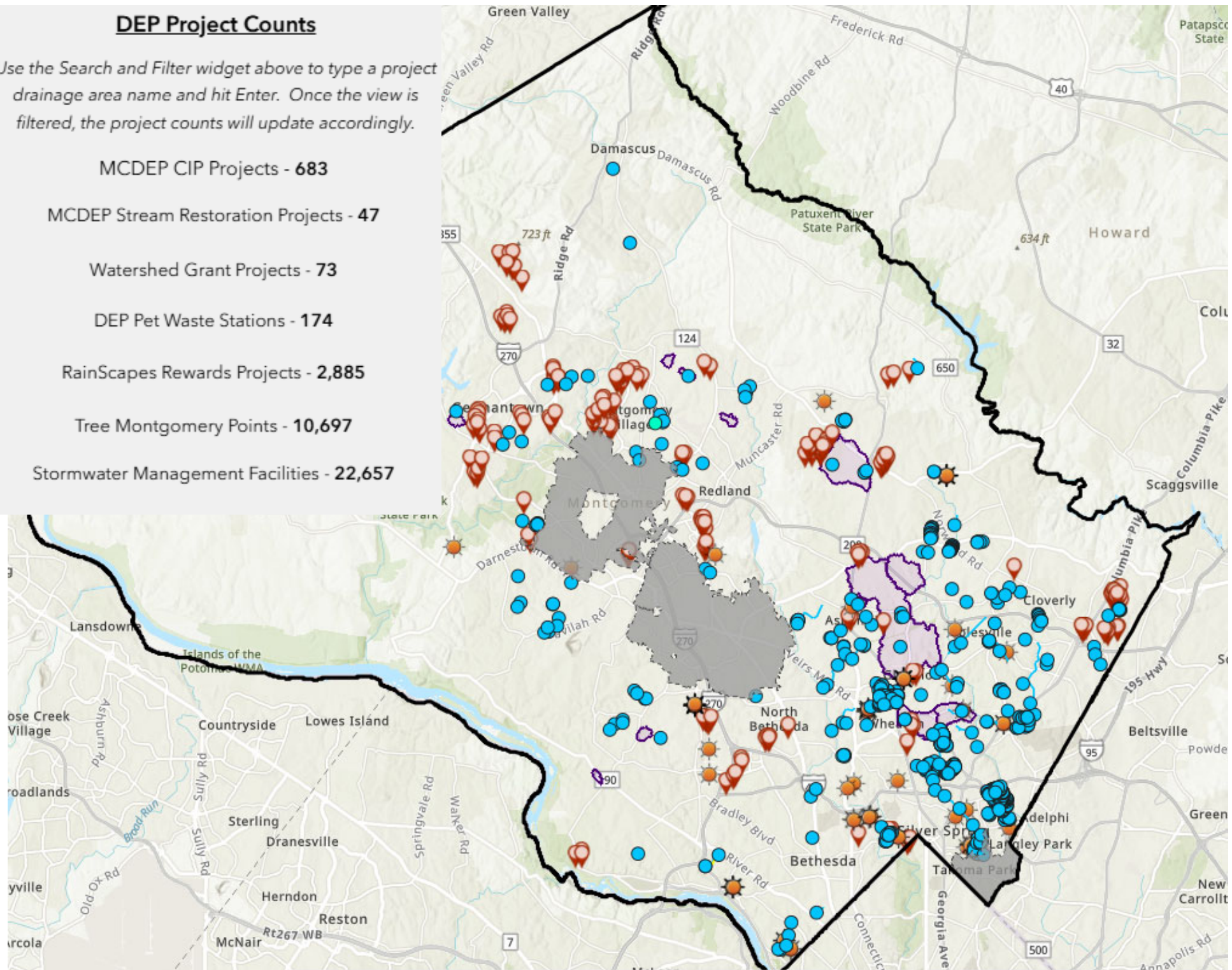
Watershed Grant Projects - 73

DEP Pet Waste Stations - 174

RainScapes Rewards Projects - 2,885

Tree Montgomery Points - 10,697

Stormwater Management Facilities - 22,657



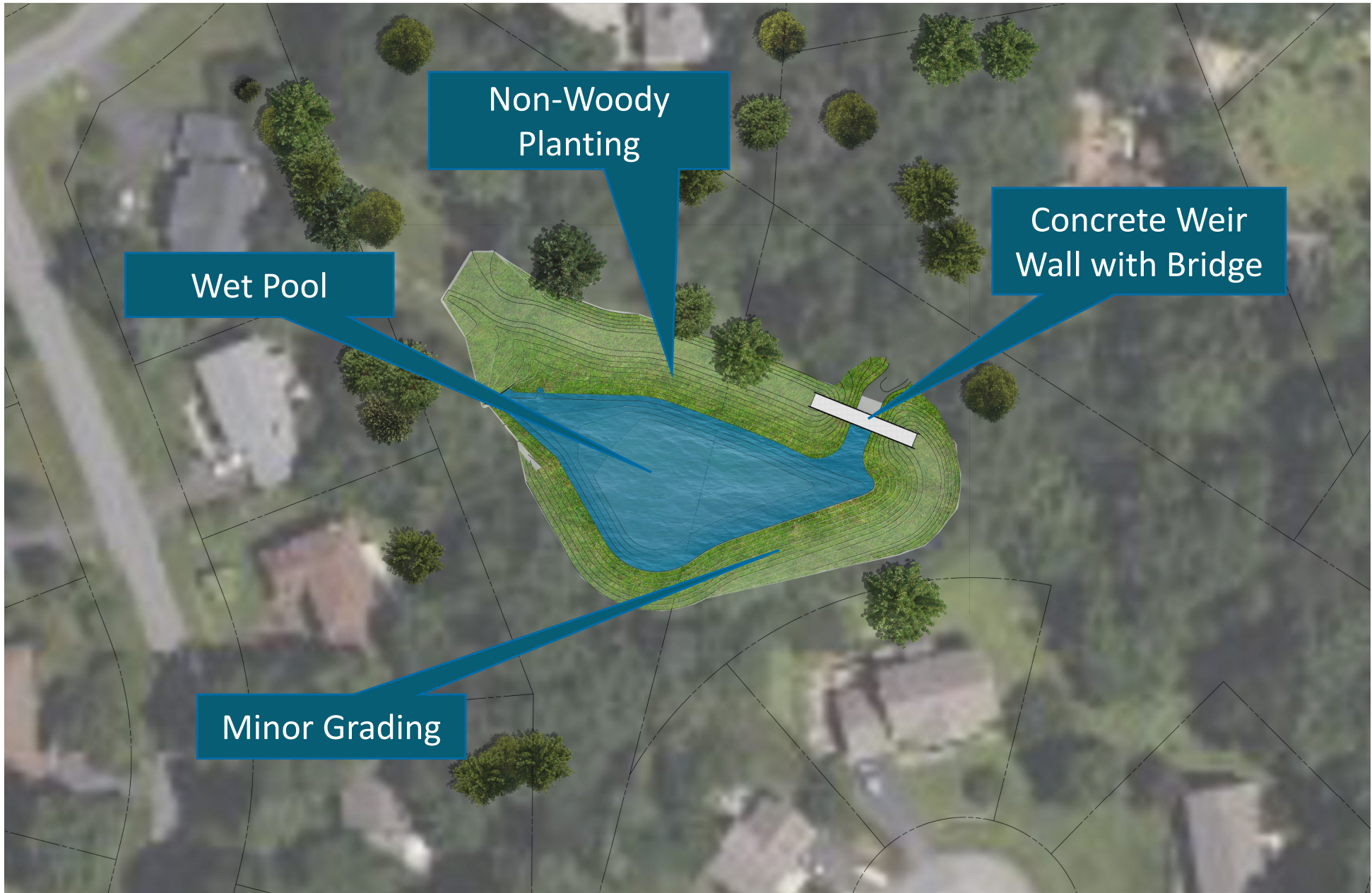
Project Location



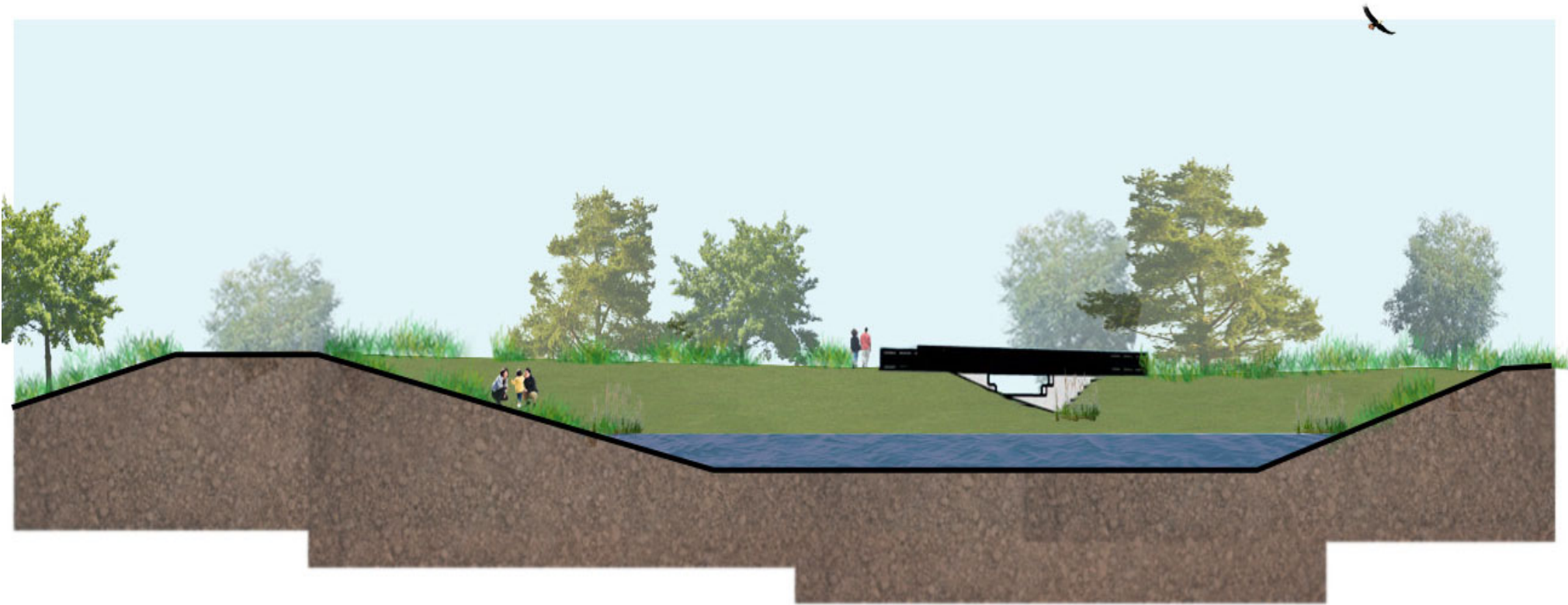
Existing Conditions



Proposed Design



Proposed Design – Cross Section



Proposed Design - Bridge / Weir

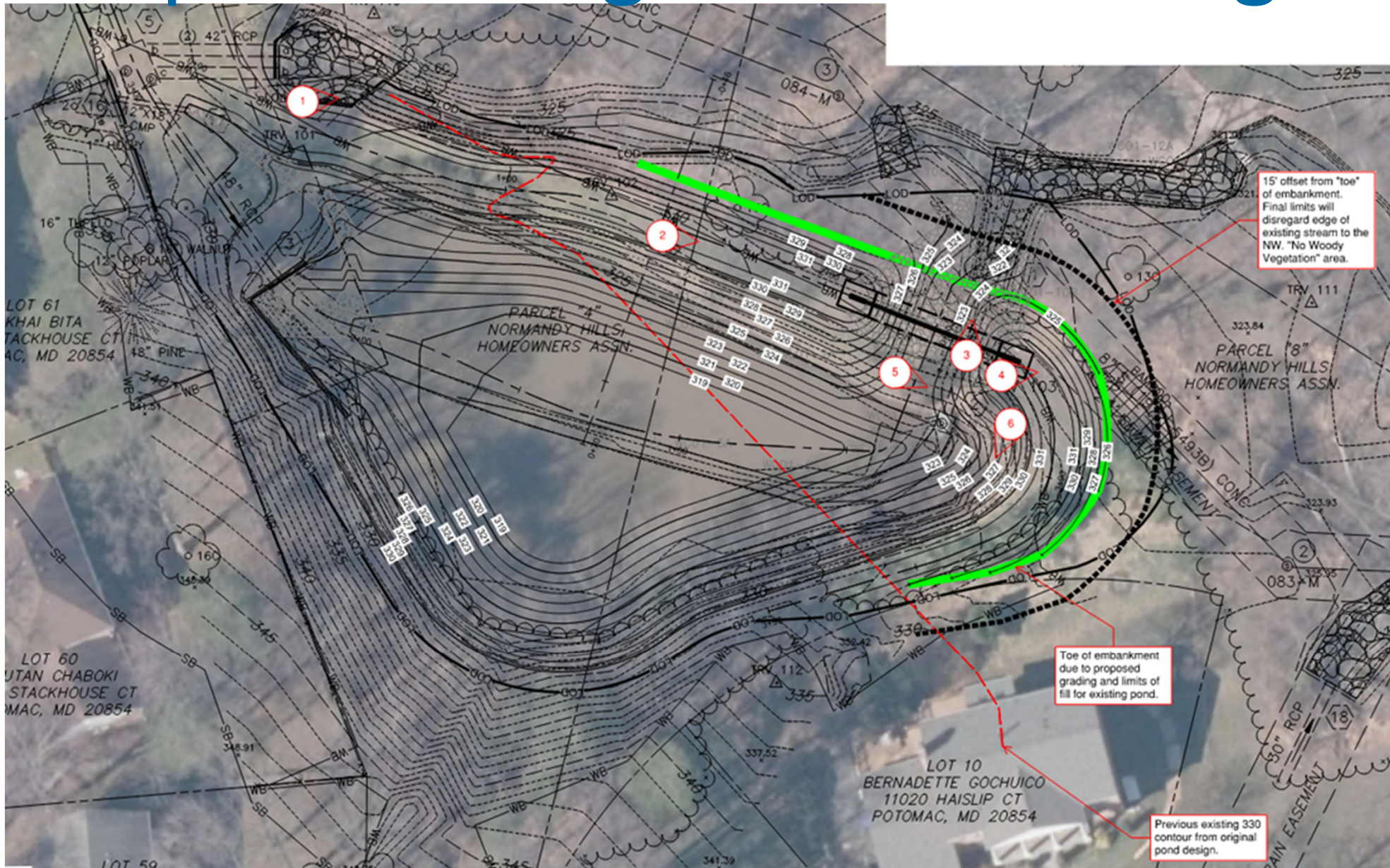


Proposed Design- Planting



Mary Anne Borge

Proposed Design- Tree Clearing



Proposed Design- Tree Clearing



Construction Expectations

Construction Hours

- Monday through Friday, 7 AM - 5 PM
- Completed in two phases, Should last about 5 months

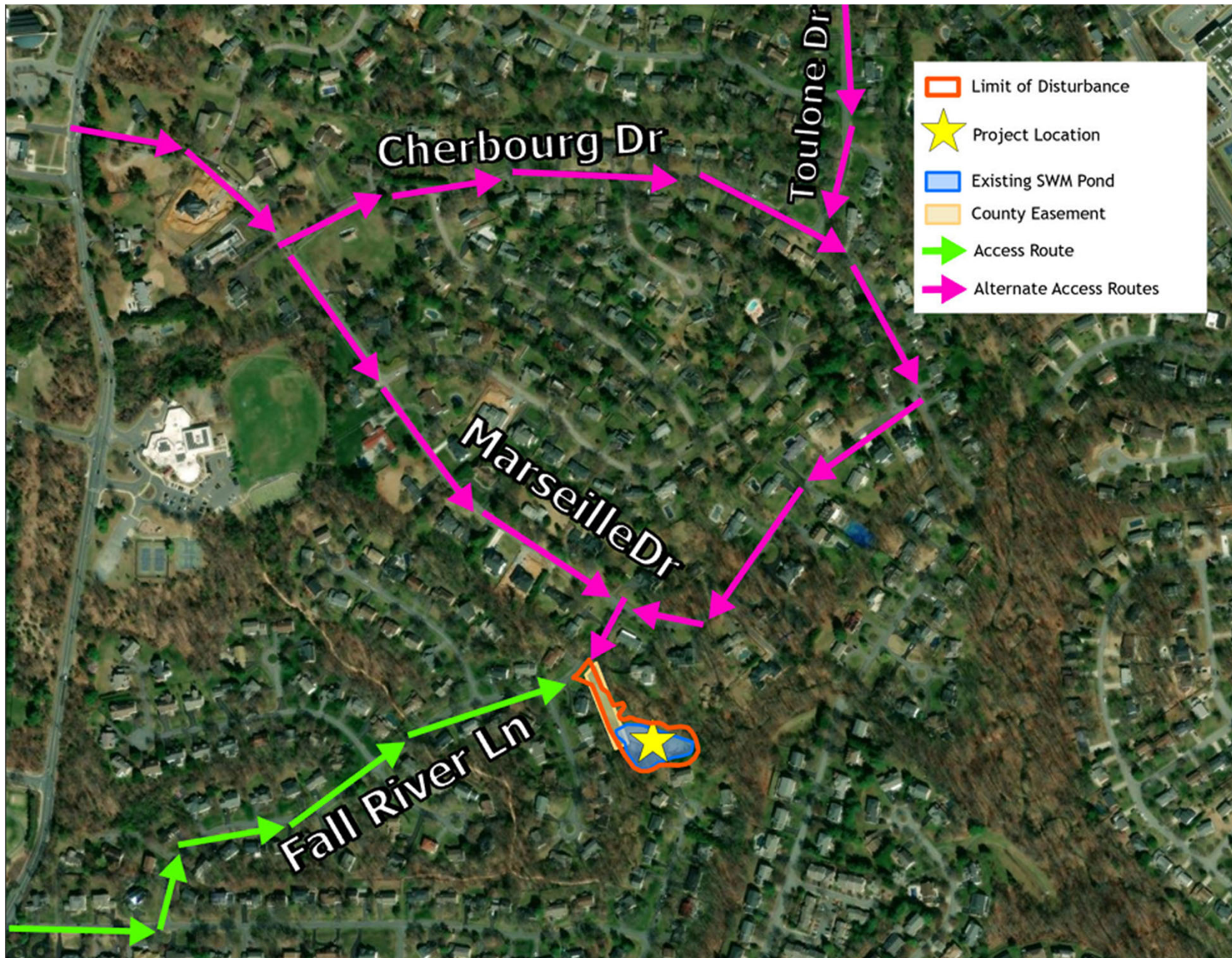
Safety

- Orange Safety Fence will be installed during construction
- Use of heavy equipment, including:
 - Backhoes, Excavators, Dump Trucks, Concrete Trucks

Traffic

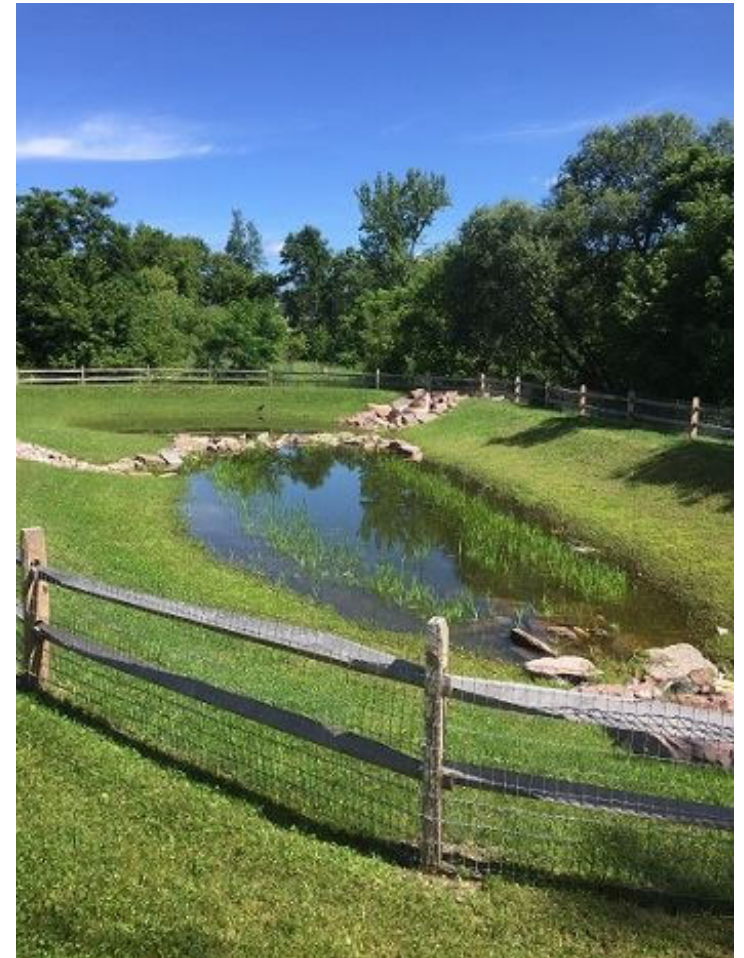
- Daily crew traffic, day parking, and material delivery to the site as needed.

Access Roads



Safety

Fence



Maintenance

Mosquitos

- Aquatic Ecosystem
- Predators
 - Midge
 - Beetles
 - Dragonfly Nymphs
 - Water Scorpions
 - Backswimmers
 - Damselfly Larvae
 - Water Strider
 - Frogs
 - Birds



Maintenance

Long term maintenance

- Montgomery County is responsible for structural BMP
- New structure will require less frequent maintenance



Example



Retrofit Schedule



Design and Permitting – Ongoing



Permits Secured – Fall/Winter 2024



Construction Start – Anticipated Spring 2025



Completion – Anticipated Summer/Fall 2025

Questions? Contact Us

William Weaver

State Business Manager

wweaver@res.us

Reid Cook

Regional Project Delivery Director

rcook@res.us

Elsa Arias

Outreach Manager – Assedo
Consulting, LLC

elsaa@assedollc.com



DEPARTMENT OF
ENVIRONMENTAL PROTECTION
MONTGOMERY COUNTY • MARYLAND